





Yesos y Mortero

**Yeso en saco**


|  | CÓDIGO       | DESCRIPCIÓN                | PVP/M <sup>2</sup> |  |
|---|--------------|----------------------------|--------------------|--|
|  | YEPL12YS0022 | IBERPLAST VA (17KG)        | 2,67               |  |
|   | YEPL12YS0023 | LONGIPS VA (17KG)          | 2,93               |  |
|   | YEPL12YS0001 | IBERFINO (17KG)            | 3,63               |  |
|   | YEPL12YS0003 | DURO THD VA (20KG)         | 4,37               |  |
|   | YEPL12YS0006 | PERLINOR SUP (20KG)        | 4,52               |  |
|   | YEPL12YS0007 | PROYAL MAX (20KG)          | 3,42               |  |
|   | YEPL12YS0018 | PROYAL XXI (20KG)          | 5,15               |  |
|   | YEPL12YS0025 | PROLITE (20KG)             | 5,08               |  |
|   | YEPL12YS0005 | MECAFINO BANDA AZUL (17KG) | 4,76               |  |
|   | YEPL12YS0024 | MECAFINO PLUS GA           | 5,12               |  |
|   | YEPL12YS0026 | MECAFINO BANDA ORO         | 5,12               |  |
|   | YEPL12YS0028 |                            |                    |  |
|   | YEPL12YS0017 | HIDROXIDO DE CAL           | 4,27               |  |
|   | YEPL12YS0014 | IBERPRIMER (12KG)          | 53,78              |  |
|   | YEPL12YS0015 | IBERCONTAK (15KG)          | 60,57              |  |

**Yeso a granel**


|   | CÓDIGO       | DESCRIPCIÓN       | PVP/M <sup>2</sup> |
|--|--------------|-------------------|--------------------|
|  | YEPL12YG0003 | PROYAL MAX GRANEL | 197,40             |
|  | YEPL12YG0000 | PROYAL XXI GRANEL | 228,60             |
|  | YEPL12YG0001 | PROLITE VA GRANEL | 272,11             |

**Mortero en saco**

|  | CÓDIGO       | DESCRIPCIÓN            | PVP   |
|---|--------------|------------------------|-------|
|  | YEPL12MO0000 | IGNIVER (SACOS 18 KGS) | 11,23 |

|  | CÓDIGO       | DESCRIPCIÓN                              | PVP  |
|---|--------------|--|------|
|  | MOFB01MO0015 | MS-20 MORTERO CAL INT. GRIS (SACO 25 KG) | 3,26 |
|   | MOFB01MO0017 | KI-7 MORTERO CAL EXT. GRIS (SACO 25 KG)  | 3,78 |

**Complementos**

|   | CÓDIGO       | DESCRIPCIÓN  | PVP/ML.     |
|---|--------------|--|-------------|
|  | YEPA01AC0001 | ESQUINERO PVC EN 2,6 M.                              | 0,40        |
|   | YEPA01AC0003 | ESQUINERO PVC EN 3 M.                                | 0,40        |
|   | YEPA01AC0004 | ESQUINERO PVC DE FACHADAS PUNTA FINA EN 2,6 M.       | 0,22        |
|   | YEPA01AC0005 | ESQUINERO PVC DE FACHADAS PUNTA REDONDEADA EN 2,6 M. | 0,22        |
|   | YERE01AC0000 | ESQUINERO METAL (1007) 2,6 MT.                       | 0,44        |
|   | YERE01AC0001 | ESQUINERO METAL (1007) 2,5 MT.                       | 0,44        |
|   | YERE01AC0003 | ESQUINERO METAL (1007) 3 MT.                         | 0,44        |
|   | YERE01AC0004 | ESQUINERO METAL (1020) 3 MT.                         | 0,44        |
|   | YERE01AC0005 | MAESTRA GALVANIZADA (1106 Z) EN 2,5 MT.              | 0,51        |
|   |              | CÓDIGO   | DESCRIPCIÓN |
|  | YERG01MA0000 | MALLA ESPECIAL YESO EN ROLLO DE 50 M.                | 41,27       |
|   | YERG01MA0001 | MALLA ESPECIAL AZUL/BLANCA MORTEROS EN ROLLO 50 M.   | 41,27       |
|   | YERG01MA0002 | MALLA ESPECIAL PINTURA EN ROLLO DE 50 M.             | 91,30       |


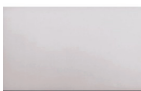

**Servicios**

|  | CÓDIGO       | DESCRIPCIÓN                           | PVP/UD. |
|--|--------------|---------------------------------------|---------|
|  | SETR01CA0000 | TRANSPORTE EN CAMIÓN COMARCA          | 95,00   |
|  | SETR01CA0001 | TRANSPORTE EN CAMIÓN PROVINCIA        | 140,00  |
|  | SETR01PO0001 | TRANSPORTE SILO OBRA A OBRA           | 236,58  |
|  | SETR01PO0002 | MOVIMIENTO DEL SILO DENTRO DE LA OBRA | 119,36  |



Escayola


**Placa de Escayola**

|  | CÓDIGO       | DESCRIPCIÓN                          | PVP/M2 |
|---|--------------|--------------------------------------|--------|
|  | YEPL09EL0000 | PLACA ESCAYOLA RASEADA 100 X 60      | 3,16   |
|   | YEPL09EL0001 | PLACA ESCAYOLA ESPOLVOREADA 120 X 80 | 3,16   |
| <b>PREFABRICADOS VALERIO S.A.</b>   | CÓDIGO       | DESCRIPCIÓN                          | PVP/M2 |
|  | YEVL03EL0000 | VALERIO PLACA ESCAYOLA 120 X 80      | 2,88   |
|   | YEVL03EL0001 | VALERIO PLACA ESCAYOLA 100 X 60      | 2,88   |

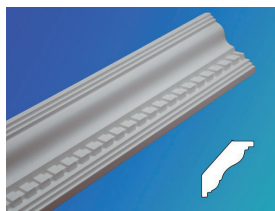
**Complementos para escayola decoración**

|  | CÓDIGO       | DESCRIPCIÓN                            | PVP/UD. |
|---|--------------|--|---------|
|  | YEAL01ES0000 | ESPARTO CON SISAL MEZCLA EN ROLLO      | 15,24   |
|   | YEAL01ES0001 | SISAL EN ROLLO                         | 24,71   |
|   | YEDA01LI0000 | LISTONES DE MADERA - PRECIO POR UNIDAD | 0,85    |
|   | YEPL12YS0027 | IBERYOLA VA 17 KG. - NUEVO FORMATO     | 2,26    |
|   | YEPL12YS0012 | IBERCOL GA SACO 10 KG.                 | 5,10    |
|   | YEPL12YS0029 | IBERCOL GA SACO 17 KG. - NUEVO FORMATO | 7,76    |

**Molduras**

| <b>PREFABRICADOS VALERIO S.A.</b>   | CÓDIGO       | DESCRIPCIÓN                   | PVP/ML. |
|---|--------------|-------------------------------|---------|
|  | YEVL01MO0008 | VALERIO MOLDURA PEQUEÑA Nº3   | 1,28    |
|   | YEVL01MO0015 | VALERIO MOLDURA PEQUEÑA Nº3B  | 1,28    |
|   | YEVL01MO0009 | VALERIO MOLDURA PEQUEÑA Nº5B  | 1,28    |
|   | YEVL01MO0016 | VALERIO MOLDURA PEQUEÑA Nº6   | 1,28    |
|   | YEVL01MO0017 | VALERIO MOLDURA PEQUEÑA Nº7   | 1,28    |
|   | YEVL01MO0000 | VALERIO MOLDURA PEQUEÑA Nº8   | 1,28    |
|   | YEVL01MO0004 | VALERIO MOLDURA PEQUEÑA Nº9   | 1,28    |
|   | YEVL01MO0013 | VALERIO MOLDURA PEQUEÑA Nº13  | 1,28    |
|   | YEVL01MO0005 | VALERIO MOLDURA PEQUEÑA Nº14  | 1,28    |
|   | YEVL01MO0012 | VALERIO MOLDURA PEQUEÑA Nº21  | 1,28    |
|   | YEVL01MO0006 | VALERIO MOLDURA PEQUEÑA Nº22  | 1,28    |
|   | YEVL01MO0007 | VALERIO MOLDURA MEDIANA Nº16  | 1,60    |
|   | YEVL01MO0011 | VALERIO MOLDURA MEDIANA Nº17B | 1,60    |
|   | YEVL01MO0001 | VALERIO MOLDURA MEDIANA Nº20  | 1,60    |
|   | YEVL01MO0002 | VALERIO MOLDURA MEDIANA Nº24  | 1,60    |
|   | YEVL01MO0010 | VALERIO MOLDURA GRANDE Nº17   | 1,92    |
|   | YEVL01MO0018 | VALERIO MOLDURA GRANDE Nº23   | 1,92    |
|   | YEVL01MO0003 | VALERIO MOLDURA GRANDE NºC-24 | 1,92    |

**Cornisas**

| <b>PREFABRICADOS VALERIO S.A.</b>   | CÓDIGO       | DESCRIPCIÓN         | PVP/ML. |
|---|--------------|---------------------|---------|
|  | YEVL02DE0003 | VALERIO CORNISA 102 | 6,28    |
|   | YEVL02DE0004 | VALERIO CORNISA 103 | 6,28    |
|   | YEVL02DE0005 | VALERIO CORNISA 104 | 6,28    |
|   | YEVL02DE0000 | VALERIO CORNISA 105 | 6,28    |
|   | YEVL02DE0006 | VALERIO CORNISA 106 | 6,28    |
|   | YEVL02DE0012 | VALERIO CORNISA 135 | 6,76    |
|   | YEVL02DE0013 | VALERIO CORNISA 140 | 6,76    |
|   | YEVL02DE0007 | VALERIO CORNISA 101 | 8,64    |
|   | YEVL02DE0008 | VALERIO CORNISA 141 | 8,64    |
|   | YEVL02DE0010 | VALERIO CORNISA 142 | 9,36    |
|   | YEVL02DE0011 | VALERIO CORNISA 143 | 9,36    |

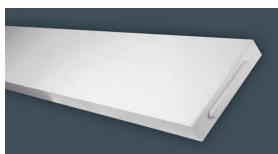
**Baquetones**
**PREFABRICADOS  
VALERIO S.A.**


CÓDIGO

DESCRIPCIÓN

PVP/M2

|              |                       |      |
|--------------|-----------------------|------|
| YEVL02DE0028 | VALERIO BAQUETON C-1  | 1,95 |
| YEVL02DE0035 | VALERIO BAQUETON C-12 | 1,95 |
| YEVL02DE0036 | VALERIO BAQUETON C-13 | 1,95 |
| YEVL02DE0037 | VALERIO BAQUETON C-14 | 1,95 |
| YEVL02DE0038 | VALERIO BAQUETON C-15 | 1,95 |
| YEVL02DE0039 | VALERIO BAQUETON C-16 | 1,95 |
| YEVL02DE0041 | VALERIO BAQUETON C-17 | 1,95 |
| YEVL02DE0042 | VALERIO BAQUETON C-18 | 1,95 |
| YEVL02DE0029 | VALERIO BAQUETON C-2  | 1,95 |
| YEVL02DE0040 | VALERIO BAQUETON C-4  | 1,95 |
| YEVL02DE0031 | VALERIO BAQUETON C-5  | 1,95 |
| YEVL02DE0032 | VALERIO BAQUETON C-9  | 1,95 |

**Baldas**
**PREFABRICADOS  
VALERIO S.A.**


CÓDIGO

DESCRIPCIÓN

PVP/M2

|              |                  |       |
|--------------|------------------|-------|
| YEVL02DE0022 | VALERIO BALDA 20 | 7,91  |
| YEVL02DE0024 | VALERIO BALDA 30 | 10,12 |
| YEVL02DE0026 | VALERIO BALDA 40 | 11,67 |
| YEVL02DE0027 | VALERIO BALDA 50 | 13,47 |

**Esquineros, Fosa y Frisos**
**PREFABRICADOS  
VALERIO S.A.**


CÓDIGO

DESCRIPCIÓN

PVP/UD.

|              |                        |      |
|--------------|------------------------|------|
| YEVL02DE0043 | VALERIO ESQUINERO C-1  | 1,95 |
| YEVL02DE0049 | VALERIO ESQUINERO C-10 | 1,95 |
| YEVL02DE0050 | VALERIO ESQUINERO C-11 | 1,95 |
| YEVL02DE0051 | VALERIO ESQUINERO C-12 | 1,95 |
| YEVL02DE0052 | VALERIO ESQUINERO C-13 | 1,95 |
| YEVL02DE0053 | VALERIO ESQUINERO C-14 | 1,95 |
| YEVL02DE0054 | VALERIO ESQUINERO C-15 | 1,95 |
| YEVL02DE0055 | VALERIO ESQUINERO C-16 | 1,95 |
| YEVL02DE0056 | VALERIO ESQUINERO C-17 | 1,95 |
| YEVL02DE0057 | VALERIO ESQUINERO C-18 | 1,95 |
| YEVL02DE0044 | VALERIO ESQUINERO C-2  | 1,95 |
| YEVL02DE0045 | VALERIO ESQUINERO C-3  | 1,95 |
| YEVL02DE0046 | VALERIO ESQUINERO C-4  | 1,95 |
| YEVL02DE0047 | VALERIO ESQUINERO C-5  | 1,95 |
| YEVL02DE0048 | VALERIO ESQUINERO C-9  | 1,95 |
| YEVL02DE0021 | VALERIO FOSA 4X4       | 2,02 |
| YEVL02DE0015 | VALERIO FRISO F-3      | 3,90 |
| YEVL02DE0018 | VALERIO FRISO F-10     | 2,65 |
| YEVL02DE0019 | VALERIO FRISO F-11     | 4,84 |
| YEVL02DE0020 | VALERIO FRISO F-12     | 2,65 |
| YEVL02DE0001 | VALERIO FRISO F-14     | 4,84 |
| YEVL02DE0014 | VALERIO FRISO F-2      | 4,84 |
| YEVL02DE0016 | VALERIO FRISO F-4      | 4,84 |
| YEVL02DE0002 | VALERIO FRISO F-5      | 4,84 |